

# GAUGES

Dry pressure gauges are for general service in fluid and pneumatic systems where an economical measurement device is needed. They are popular on air compressors and for general contractors use.

Note: Center back mount gauges can be ordered with a U-clamp mounting option.

Liquid filled gauges are well suited for hydraulic, oil and gas, pressure wash, and process systems. The liquid provides significant cushioning to reduce pointer flutter and internal damage. Center back mount gauges are available by specifying "-CBM" after PG in the part number. Center back mount gauges can be ordered with a U-clamp or front flange mounting option.

Part No.	Description	PRICE EACH
----------	-------------	------------

## PGD... DRY PRESSURE GAUGES



PGD15	1.5" face with 1/8" bottom mount	\$ 7.00
PGD15-CBM	1.5" face with 1/8" center back mount	7.00
PGD20	2.0" face with 1/4" bottom mount	7.60
PGD20-CBM	2.0" face with 1/4" center back mount	7.60

Accuracy...	1.6%
Socket material...	Brass
Bourdon tube...	Bronze
Case...	Steel
Window...	Glass
Filling...	None
Temperature range...	-20°C (4°F) to 60°C (140°F)

### PRESSURE RANGES AVAILABLE...

Dash Size	Pressure Range psi	kPa
-0015	0-15	0-100
-0030	0-30	0-200
-0060	0-60	0-400
-0100	0-100	0-600
-0160	0-160	0-1100
-0200	0-200	0-1200

## PGB-FF... FRONT FLANGE



PGB-FF	Fits 2.5" center back mount	11.00
--------	-----------------------------	-------

## PG-UC... U CLAMP



PG-UC	Fits 2.5" gauge	8.90
-------	-----------------	------

Part No.	Description	PRICE EACH
----------	-------------	------------

## PG... LIQUID FILLED PRESSURE GAUGES



**MOST POPULAR**

PG	2.5" face with 1/4" bottom mount	\$ 17.50
PG-CBM	2.5" face with 1/4" centre back mount	17.50
PG-CBM-10000	10,000 psi	32.00

Accuracy...	1.6%
Socket material...	Brass
Bourdon tube...	Bronze
Case...	Type 304 Stainless Steel
Window...	Plexiglas
Filling...	Glycerin
Thread...	1/4" NPT
Mount...	Bottom
Temperature range	-25°C (-13°F) to 100°C (212°F)

### PRESSURE RANGES AVAILABLE...

Dash Size	Pressure Range psi	kPa
-VA00	-30" Hg-0	-100-0
-VA30	-30" Hg-30	-100-200
-0015	0-15	0-100
-0030	0-30	0-200
-0060	0-60	0-400
-0100	0-100	0-600
-0160	0-160	0-1100
-0200	0-200	0-1200
-0300	0-300	0-2000
-0400	0-400	0-2500
-0600	0-600	0-4000
-1000	0-1000	0-6000
-1500	0-1500	0-10000
-2000	0-2000	0-12000
-3000	0-3000	0-20000
-5000	0-5000	0-30000
-6000	0-6000	0-40000
-10000	0-10000	0-60000

For best results when calibrating gauges, choose a calibration pressure that is in the middle range of the gauge (between the ten o'clock and two o'clock position on the dial).

# ALL STAINLESS GAUGES

PGSS gauges are made with Type 316 internal surfaces, for maximum corrosion resistance. Center back mount gauges can be ordered with a U-clamp or front flange mounting option. Center back mount gauges are available by specifying "-CBM" after PGSS in the part number.

Process gauges feature a higher level of accuracy throughout their pressure range, and a micrometer pointer adjustment. As an additional safety feature process gauges are designed to blow out at the back if pressures are exceeded.

Part No.	Description	PRICE EACH
----------	-------------	------------

## PGSS... STAINLESS LIQUID FILLED PRESSURE GAUGES



PGSS	2.5" face with 1/4" bottom mount	\$ 73.90
PGSS40	4.0" face with 1/2" bottom mount	121.00
PGSS40-15000	15,000 psi	270.00

Accuracy...	1%
Socket material...	Type 316 Stainless Steel
Bourdon tube...	Type 316 Stainless Steel
Case...	Type 304 Stainless Steel
Window...	Plexiglas
Filling...	Glycerin
Thread...	1/2" NPT for 4" gauges
Mount...	Bottom
Temperature range	-40°C (-40°F) to 100°C (212°F)

### PRESSURE RANGES AVAILABLE...

Dash Size	Pressure Range	
	psi	kPa
-VA00	-30" Hg-0	-100-0
-VA30	-30" Hg-30	-100-200
-VA150	-30" Hg-150	-100-1000
-VA300	-30" Hg-300	-100-2000
-0015	0-15	0-100
-0030	0-30	0-200
-0060	0-60	0-400
-0100	0-100	0-600
-0160	0-160	0-1100
-0200	0-200	0-1200
-0300	0-300	0-2000
-0400	0-400	0-2500
-0600	0-600	0-4000
-1000	0-1000	0-6000
-1500	0-1500	0-10000
-2000	0-2000	0-12000
-3000	0-3000	0-20000
-5000	0-5000	0-30000
-6000	0-6000	0-40000
-10000	0-10000	0-60000
-15000	0-15000	0-100000

Part No.	Description	PRICE EACH
----------	-------------	------------

## PGP... PROCESS GAUGES



PGP	4.0" face with 1/2" bottom mount	\$145.00
-----	----------------------------------	----------

Accuracy...	0.5%
Socket material...	Type 316 Stainless Steel
Bourdon tube...	Type 316 Stainless Steel
Case...	Polypropylene
Window...	Plexiglas
Filling...	Glycerin
Thread...	1/2" NPT
Mount...	Bottom
Temperature range	-40°C (-40°F) to 100°C (212°F)

### PRESSURE RANGES AVAILABLE...

Dash Size	Pressure Range	
	psi	kPa
-VA00	-30" Hg-0	-100-0
-VA15	-30" Hg-15	-100-100
-VA30	-30" Hg-30	-100-200
-0015	0-15	0-100
-0030	0-30	0-200
-0060	0-60	0-400
-0160	0-160	0-1100
-0200	0-200	0-1200
-0400	0-400	0-2500
-0600	0-600	0-4000
-1000	0-1000	0-6000
-1500	0-1500	0-10000
-2000	0-2000	0-12000
-3000	0-3000	0-20000
-5000	0-5000	0-30000
-6000	0-6000	0-40000

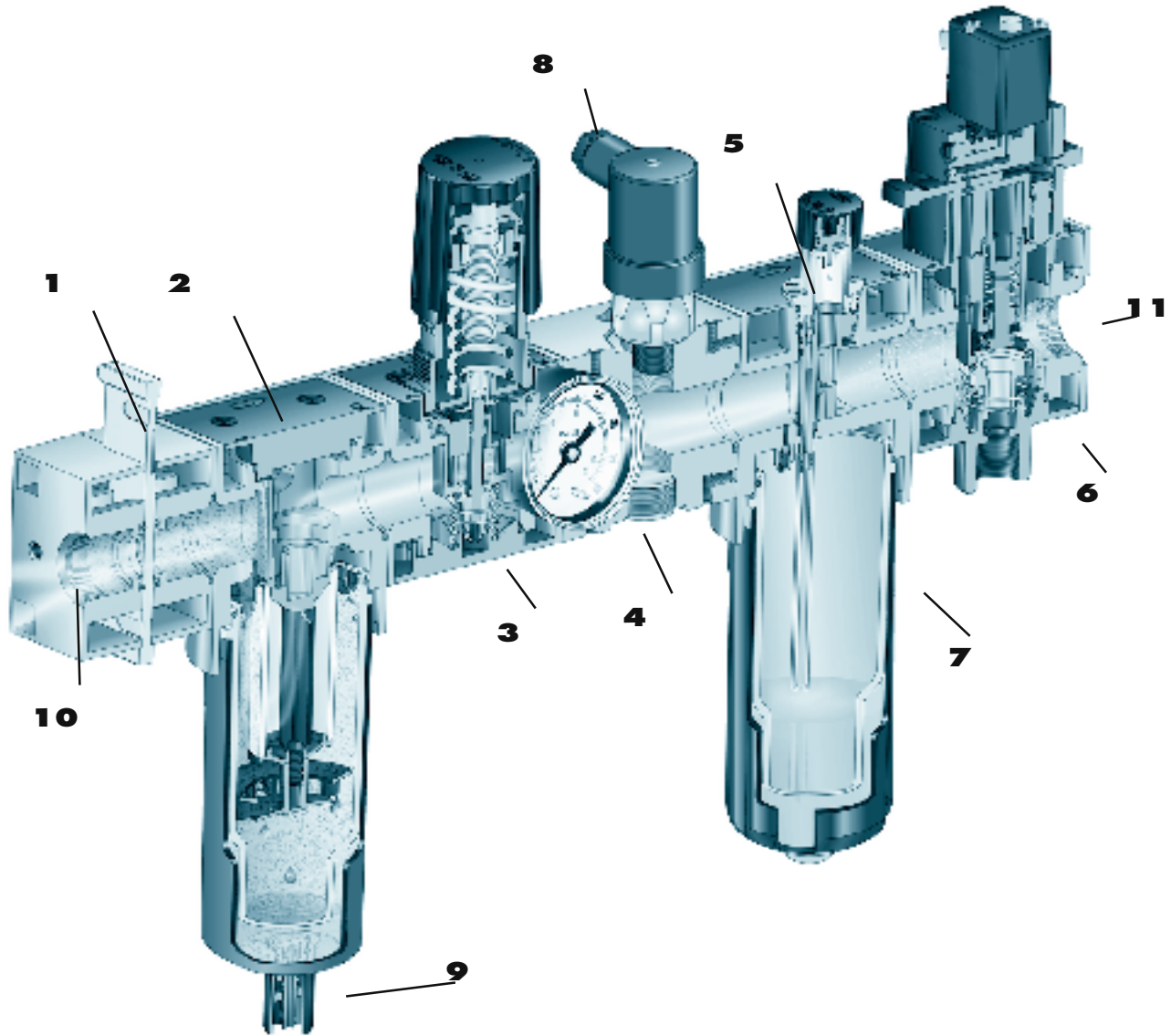
TG



## TG... TEMPERATURE GAUGES

This temperature gauge is commonly used to monitor water temperature in winter where freezing will cause problems. The 2.5" long rod is back mounted and can be inserted into the water flow via a tee junction or 1/2" NPT pipe plug. The face is 3" diameter.

Part No.	Temperature Range		Thread	Rod Length	PRICE EACH
	°C	°F			
TG-4070	-40°-70°	-40°-160°	1/2" NPT	2.5"	\$ 107.00



## 1 - SHUT OFF VALVE

Manual shut off used to relieve down stream pressure for servicing or maintenance. Security hole provided for lockout capabilities. Also may be used as a stand-alone unit.

## 2 - FILTER

Two types available - Particulate filter with 5 Micron filtration (shown), used as a primary filter to remove water, dust, and debris from air line. Water removal efficiency at 90% or better at rated flow. Coalescing filter - used as a secondary filter to remove up to 99.99% of oil and particles. Available with four different type elements: 0.1, 0.3, 0.7 micron filtration, and a vapor adsorbing element that utilizes activated carbon to deodorize compressed air.

## 3 - REGULATOR

Reduces supply pressure to a required working pressure, available in relieving or non-relieving styles, and in four different pressure ranges.

## 4 - DIVERTER BLOCK

Provides total versatility, mounts directly in-line to allow additional components to be manifolded without excessive pressure drop.

## 5 - LUBRICATOR

Designed to meter oil aerosols into the air stream where lubrication is required. Tamper resistant adjustment knob eliminates unauthor-

ized adjustments.

## 6 - SOLENOID SOFT START QUICK EXHAUST VALVE

When solenoid air pilot is energized, adjustable flow control allows system to be pressurized slowly. At 60psi of down stream pressure, slow start shifts to full flow condition. When solenoid air pilot is de-energized down stream pressure exhausts to atmosphere. Equipped with manual override and lockout.

## 7 - BOWLS

Three types available: Polycarbonate bowl with guard, metal bowl with sight glass, and Circle Vision. Circle Vision is a metal bowl wrapped in polycarbonate which allows for a 360 degree visual liquid level.

## 8 - PRESSURE SWITCH

Allows for remote monitoring of system pressure. An adjustable, tamper resistant knob resists unauthorized changes.

## 9 - DRAINS

3 types available - manual drain with internal barb fitting for drain tube(standard), flexible drain, and automatic drain.

## 10 - PRODUCT CONNECTION

Each component is engineered to connect directly together without inserts or special tools, this ensures optimum stability and strength.

## 11 - HIGH FLOW

Designed for high flows with minimal pressure drop.

# MODULAR FILTERS, REGULATORS & LUBRICATORS

Note: SCFM is Standard Cubic Feet per Minute  
 \*Suffix M indicates metal bowl with site glass.  
 1" size is high flow, non-modular design.  
 Filters with polycarbonate bowls are rated to 150 psi.  
 Metal bowl filters and all other components are rated to 200 psi.  
 Regulators can be adjusted from 0 to 200 psi.  
 Gauge ports are 1/8" for 12 & 22 series. Larger sizes have 1/4" gauge ports.  
 Particulate filters have 5 micron elements.  
 Coalescing filters come standard with 0.3 micron elements.  
 Stock filters have manual drains fitted with a barb for drain tubing attachment. Automatic drains are available on special order.

Part No.	Pipe Size	Flow Capacity	PRICE EACH
<b>R R... REGULATOR</b>			
R12R-01	1/8"	10 SCFM	\$ 39.40
R12R-02	1/4"	10 SCFM	40.70
R22R-02	1/4"	65 SCFM	73.20
R22R-03	3/8"	75 SCFM	73.20
R22R-04	1/2"	75 SCFM	73.20
R32R-04	1/2"	155 SCFM	98.50
R32R-06	3/4"	155 SCFM	98.50
R50R-08	1"	395 SCFM	265.50



Part No.	Pipe Size	Flow Capacity	PRICE EACH
----------	-----------	---------------	------------

**F\_B... PARTICULATE FILTER**

F12B-02	1/4"	30 SCFM	\$ 54.10
F22B-02	1/4"	45 SCFM	91.70
F22B-02M*	1/4"	45 SCFM	96.80
F22B-03	3/8"	60 SCFM	91.70
F22B-03M*	3/8"	60 SCFM	96.80
F22B-04	1/2"	70 SCFM	91.70
F22B-04M*	1/2"	70 SCFM	96.80
F32B-04	1/2"	105 SCFM	125.90
F32B-04M*	1/2"	105 SCFM	130.90
F32B-06	3/4"	110 SCFM	125.90
F32B-06M*	3/4"	110 SCFM	130.90
F50B-08	1"	260 SCFM	339.60



**P\_B... COMBINED PARTICULATE FILTER & REGULATOR**

P12B-01	1/8"	10 SCFM	93.20
P12B-02	1/4"	10 SCFM	93.20
P22B-02	1/4"	65 SCFM	146.20
P22B-02M	1/4"	65 SCFM	151.10
P22B-03	3/8"	75 SCFM	146.20
P22B-03M	3/8"	75 SCFM	151.10
P22B-04	1/2"	75 SCFM	146.20
P22B-04M	1/2"	75 SCFM	151.10
P32B-04	1/2"	130 SCFM	186.60
P32B-04M	1/2"	130 SCFM	191.60
P32B-06	3/4"	130 SCFM	186.60
P32B-06M*	3/4"	130 SCFM	191.60



**F\_D... COALESCING FILTER - 0.3 MICRON ELEMENT**

F12D-02	1/4"	9 SCFM	100.40
F22D-02	1/4"	15 SCFM	148.30
F22D-02M*	1/4"	15 SCFM	153.40
F22D-03	3/8"	15 SCFM	148.30
F22D-03M*	3/8"	15 SCFM	153.40
F32D-04	1/2"	15 SCFM	207.60
F32D-04M*	1/2"	15 SCFM	212.70
F32D-06	3/4"	48 SCFM	207.60
F32D-06M*	3/4"	48 SCFM	212.70



**C\_D... COMBINED COALESCING FILTER & REGULATOR**

C12D-02	1/4"	8 SCFM	\$ 145.50
C22D-04	1/2"	13 SCFM	213.90
C22D-04M*	1/2"	13 SCFM	219.00
C32D-04	1/2"	47 SCFM	230.60
C32D-04M*	1/2"	47 SCFM	235.70
C32D-06	3/4"	47 SCFM	230.60
C32D-06M*	3/4"	47 SCFM	237.90



Note: For 0.7 micron, specify F\_C and for 0.1 micron, specify F\_E.

Note: SCFM is Standard Cubic Feet per Minute  
 \*Suffix M indicates metal bowl with site glass.  
 1" size is high flow, non-modular design.  
 Filters with polycarbonate bowls are rated to 150 psi.  
 Metal bowl filters and all other components are rated to 200 psi.  
 Regulators can be adjusted from 0 to 200 psi.  
 Gauge ports are 1/8" for 12 and 22 series. Larger sizes have 1/4" ports.

**Part No.      Pipe Size      Flow Capacity      PRICE EACH**

**L L... LUBRICATORS**

L12L-02	1/4"	35 SCFM	\$ 79.20
L22L-02	1/4"	40 SCFM	107.60
L22L-02M*	1/4"	40 SCFM	112.90
L22L-03	3/8"	70 SCFM	107.60
L22L-03M*	3/8"	70 SCFM	112.90
L22L-04	1/2"	100 SCFM	107.60
L22L-04M*	1/2"	100 SCFM	112.90
L32L-04	1/2"	100 SCFM	133.90
L32L-04M*	1/2"	110 SCFM	137.70
L32L-06	3/4"	150 SCFM	132.80
L32L-06M*	3/4"	150 SCFM	137.70
L50L-08	1"	325 SCFM	322.00



**FRL ACCESSORIES**



Part No.	Description	PRICE EACH
AKF02	Auto Drain	\$ 54.30
DKF02	Plastic Manual Drain	5.40
QKF02	Metal Manual Drain	12.80

**REPLACEMENT FILTERS**

**Fits**

**Particulate filters, 5 micron element**

EKF12B	F12B and P12B Series	\$ 20.60
EKF22B	F22B and P22B Series	22.20
EKF32B	F32B and P32B Series	22.20
EKF50B	F50B Series	102.60

**Coalescing filters, 0.3 micron element**

EKF12D	F12D and C12D Series	48.40
EKF22D	F22D and C22D Series	58.90
EKF32D	F32D and C32D Series	76.30



**IN-LINE LUBRICATORS...**

These lubricators are designed to provide an oil mist to lubricate reciprocating tools. Oil flow is regulated by screw adjustment, and a transparent viewing port allows oil level checks. Please install within 25 ft of tool and refer to arrow for air flow direction. Recommended for reciprocating tools only, and not recommended for constant flow applications.

Use any non-detergent, petroleum based light oil such as SAE 10/150SSU. Do not use synthetic oils or oils containing additives or solvents.



Part No.	Pipe Size	Oil Capacity	Maximum Pressure	Flow Capacity (at 70 psi)	PRICE EACH
PL-300	1/2"	41ml (1.4 US fl oz)	500 psi	30 scfm	\$ 139.40
PL-400	3/4"	109 ml (3.7 US fl oz)	200	70 scfm	145.80

# SERVICE STATION ACCESSORIES

Part No. Description PRICE EACH

## RUBBER SPOUT RADIATOR FAUCETS



40R 1/4" NPT Inlet with Rubber Spout \$ 31.40

## ALUMINUM MANIFOLD CONNECTIONS



3404  
3406  
3408



L-30

3404 1/4" NPT Three-Way Manifold \$ 16.90  
3406 3/8" NPT to 1/4" NPT Three-Way Manifold 17.30  
3408 1/2" NPT to 1/4" NPT Three-Way Manifold 17.60  
L-30 1/2" NPT to 1/4" NPT, Four Outlet Block Manifold 35.00

## PRESSURE GAUGES



902 Heavy-Duty 10-150 psi Dual Foot Service Gauge \$ 27.90  
11 1/2" long for trucks and buses



908 Heavy-Duty 20-120 psi Dual Foot Pocket Gauge \$ 14.20

## INFLATOR CHUCKS



104 1/4" Ball Foot Chuck with 1/4" NPT Inlet \$ 5.70



107 Dual Foot Chuck without Shut-Off \$ 17.20



108 Dual Foot Chuck with Shut-Off \$ 16.50



119 Lock-On Chuck \$ 19.10



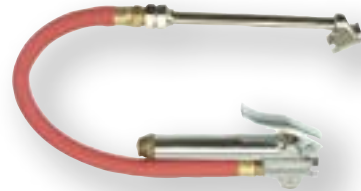
126 Straight Chuck with Shut-Off \$ 6.30  
127 Straight Chuck without Shut-Off 7.20

Part No. Description PRICE EACH



150 Tire Inflator Gauge with 12" Whip Hose \$ 56.00

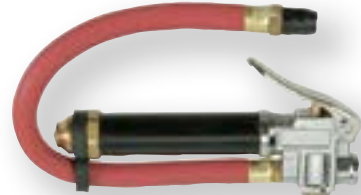
Straight chuck with 12" whip hose and inflator gauge with brass bar calibrated in 2 psi increments from 10-90 psi. Standard unit for commercial applications



151 Tire Inflator Gauge with 12" Whip Hose \$ 77.90

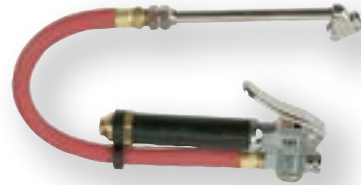
Swivel dual foot chuck with 12" whip hose and inflator gauge with brass bar calibrated in 2 psi increments from 10-90 psi.

## HEAVY DUTY INFLATOR CHUCKS



100 Heavy-duty Tire Inflator Gauge with 12" Whip Hose \$ 68.10

Straight chuck with 12" whip hose and inflator gauge with brass bar calibrated in 2 psi increments from 10-120 psi. Heavy casting with protective cover over gauge tube.



101 Heavy-duty Tire Inflator Gauge with 12" Whip Hose \$ 74.50

Swivel dual foot chuck with 12" whip hose and inflator gauge with brass bar calibrated in 2 psi increments from 10-120 psi. Heavy casting with protective cover over gauge tube.

Gauges & Accessories

## TIRE VALVES

Tire valves were invented by August Schrader and his son George, and they patented the design in 1898. Tire valves are standardized around the world and all are basically this same design, which hasn't changed in over 100 years. The male thread dimension is 0.305" O.D. x 32 threads per inch.

Part No.	Description	PRICE EACH
----------	-------------	------------

### NPT TANK VALVES



G1601TV-02 (old#700)	1/8" NPT Tank Valve, 3/8" Long Stem	\$ 3.40
G1601TVL-02 (old#701)	1/8" NPT Tank Valve, 3/4" Long Stem	3.40
G1601TVL-04 (old#701-2)	1/4" NPT Tank Valve, 5/8" Long Stem	4.50
G21TVB-030-025 (old#701-42)	1/4" Barb Tank Valve	9.50

### SCREW ON BICYCLE PUMP CHUCK VALVES

G22TVB-030-019 (old#705)	3/16" Barb	\$ 3.20
G22TVB-030-025 (old#706)	1/4" Barb	3.70



## SWIVEL JOINTS

Part No.	Description	PRICE EACH
----------	-------------	------------

### LOW PRESSURE SWIVEL JOINTS FOR AIR AND WATER



G1608XB-04-04	1/4" NPT 150 psi Brass Straight Swivel	\$ 7.00
G1608XB-06-06	3/8" NPT 150 psi Brass Straight Swivel	14.20



G1698XA-04-04 (old #344U)	1/4" NPT 150 psi Alum/steel 360° Swivel	22.00
------------------------------	---	-------



G21XS-025-025 (old #444S)	1/4" NPT 1/4" Hose Barb Ball Swivel	17.10
G21XS-025-038 (old #446S)	1/4" NPT 3/8" Hose Barb Ball Swivel	14.40

### HIGH PRESSURE SWIVEL JOINTS FOR PRESSURE WASH



G1608XB-3000-04-04	1/4" NPT 3000 psi Brass Straight Swivel	\$ 15.10
G1608XB-3000-06-06	3/8" NPT 3000 psi Brass Straight Swivel	17.50



G1608XSS-04-04	1/4" NPT 5000 psi Brass Straight Swivel	22.90
G1608XSS-06-06	3/8" NPT 3000 psi Brass Straight Swivel	28.10

Note: Pressure wash swivels are not suitable for oil or hydraulic service. For fuel hose swivels, see section 1. For hydraulic swivels, please refer to the PULSAR product line.

# BLOW GUNS & ACCESSORIES

All the blow guns on this page are supplied with  $\frac{1}{4}$ " female NPT thread.

**Blow Gun Safety:** Standard blow guns must only be used where air pressure is strictly regulated to 30 psi or less. For higher pressure air lines, safety blow guns must be specified. Safety blow guns feature a vented tip that allows air to escape if the tip is held against a solid surface, so that pressure at the tip will not exceed 30 psi, even if inlet pressure is higher. Even for safety blow guns, inlet pressure should not exceed 110 psi.

Do not confuse this premium blowgun with cheap look-a-likes. This product is designed for industrial use, with:

- high blowing force (18 CFM flow for full flow model, 7 CFM for safety design).
- ergonomic lightweight (112 gram) design.
- easy hanging design for quick retrieval and convenient storage.
- comfortable acetal handle insulates against cold air flow.
- available in full flow and safety designs (see 11-208-3150 below).

Part No.	Description	PRICE EACH
----------	-------------	------------

### STANDARD BLOW GUNS

200	Full-Flow Blow Gun	\$ 14.80
201	Rubber Tipped Blow Gun	\$ 17.20
211	Rubber Kink-Operated Blow Gun	\$ 9.00

### PREMIUM ERGONOMIC ANGLED BLOW GUN

11-208-0150	Premium Angled Blow Gun	\$ 43.20
-------------	-------------------------	----------

### SAFETY BLOW GUNS

204-30A	Lever-Operated Safety Blow Gun C/W Tamper-Proof Tip	\$ 20.10
208	Side Vented Safety Blow Gun	\$ 20.70

### PREMIUM ERGONOMIC SAFETY BLOW GUN

11-208-3150	Premium Safety Blow Gun With six-outlet star tip for safety venting and reduced noise	\$ 45.80
-------------	--	----------

Part No.	Description	PRICE EACH
----------	-------------	------------

### NEEDLE TIP ASSORTMENT

200NT	Needle Tip Assortment	\$ 41.90
-------	-----------------------	----------

### BLOW GUN REPLACEMENT TIPS

200T	Blow Gun Replacement Tip	\$ 4.10
202	Rubber Blow Gun Tip	6.30
209	Safety Blow Gun Tip	12.40

### SIPHON SPRAY TIP

221	Siphon Spray Tip	\$ 11.20
-----	------------------	----------

### THROTTLE AIR VALVES

235	$\frac{1}{4}$ " Throttle Valve	\$ 32.10
-----	--------------------------------	----------

### LEVER HANDLE VALVES

240	$\frac{1}{4}$ " Lever Handle Valve	\$ 18.00
-----	------------------------------------	----------



**Part No. Description PRICE EACH**

**NPT BUTTON STYLE BLEEDER VALVES**

711 1/8" NPT Button Style Bleeder Valve \$ 5.80



**HIGH VOLUME AIR/WATER VALVE**

XP100-050 1/2" NPT valve (old #D204-50) \$ 160.90



**G1600VB... BREATHER VENT SILENCER - NICKEL PLATED STEEL**

G1600VB-02 1/8" \$ 3.80  
 G1600VB-04 1/4" 4.80  
 G1600VB-06 3/8" 6.70  
 G1600VB-08 1/2" 9.20



Note: Screen is 40 micron mesh sintered bronze

**EXHAUST MUFFLER WITH BRONZE FILTER**

G1600EM-02 1/8" \$ 4.20  
 G1600EM-04 1/4" 5.40  
 G1600EM-06 3/8" 6.50  
 G1600EM-08 1/2" 11.40



**TAPERED SPRING GUARDS**

TSG-063 5/8" I.D. Hose Tapered Spring Guard \$ 3.20



**INTERNAL SPRINGS**

These springs are typically placed inside softwall fuel hoses such as G603 to prevent kinking near the end fittings.



SGI-075 Internal spring guard for 3/4" I.D. hose \$ 1.20  
 SGI-100 Internal spring guard for 1" I.D. hose 1.30

**Part No. Description PRICE EACH Pkg**  
**Loose Std Qty**

**PLASTIC STRAIN RELIEVER**

MBR 0.635" I.D. molded plastic guard 1.40 1.20 10  
 TPG-530 0.530" I.D. tapered plastic guard 5.95 4.10 10  
 TPG-625 0.625" I.D. tapered plastic guard 5.95 4.10 10  
 TPG-725 0.725" I.D. tapered plastic guard 5.95 4.10 10



**Part No. Description PRICE EACH**

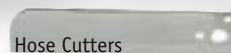
**HOSEBUN® HOSE SUPPORTS**

HB-300 3" hose support \$ 170.00  
 HB-400 4" hose support 179.00  
 HB-200D 2" hose support with D-ring 181.00  
 HB-300D 3" hose support with D-ring 180.00  
 HB-400D 4" hose support with D-ring 187.00



**HOSE CUTTERS & BLADES**

G99 Hose Cutters \$ 16.40  
 G99B Replacement Blades 6.00



**G99TSNIP MINI TUBE CUTTER \$ 27.70**



**GREEN LINE BIN BOXES**

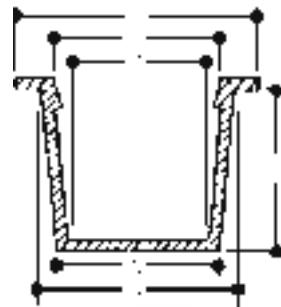
GBIN-4 Green Line 4" Bin Box with Dividers \$ 1.35  
 GBIN-6 Green Line 6" Bin Box with Dividers 1.75



# ACCESSORIES

## G9 PROTECTIVE CAP PLUGS

Part No.	Cross Ref.	Dimensions (inches)				PRICE EACH		Std Pkg
		A-B	C-D	E	F	Loose	Std Pkg	
G9-01	5	0.236 - 0.302	0.174 - 0.240	0.380	0.440	\$ 0.25	\$ 0.17	100
G9-02	7	0.299 - 0.365	0.235 - 0.302	0.380	0.500	0.25	0.17	100
G9-03	9	0.361 - 0.427	0.298 - 0.365	0.380	0.560	0.25	0.17	100
G9-04	11	0.419 - 0.485	0.356 - 0.422	0.380	0.630	0.25	0.17	100
G9-04X	12	0.447 - 0.513	0.385 - 0.451	0.380	0.660	0.29	0.19	100
G9-05	13	0.471 - 0.547	0.409 - 0.485	0.440	0.690	0.29	0.19	100
G9-05X	14	0.500 - 0.576	0.440 - 0.516	0.440	0.720	0.29	0.19	100
G9-06	15	0.532 - 0.608	0.468 - 0.545	0.440	0.750	0.29	0.19	100
G9-06X	17	0.550 - 0.631	0.487 - 0.568	0.470	0.750	0.29	0.19	100
G9-07	16	0.531 - 0.620	0.468 - 0.555	0.500	0.750	0.32	0.21	100
G9-07X	20	0.610 - 0.695	0.549 - 0.634	0.500	0.813	0.32	0.21	100
G9-08	21	0.640 - 0.727	0.578 - 0.664	0.500	0.880	0.32	0.21	100
G9-08X	22	0.675 - 0.754	0.615 - 0.690	0.630	0.880	0.32	0.21	100
G9-09	23	0.690 - 0.788	0.628 - 0.726	0.560	0.940	0.32	0.21	100
G9-09X	26	0.725 - 0.823	0.663 - 0.761	0.560	0.970	0.32	0.21	100
G9-10	27	0.750 - 0.848	0.687 - 0.785	0.560	1.000	0.37	0.24	100
G9-11	28	0.802 - 0.911	0.740 - 0.849	0.630	1.060	0.37	0.24	100
G9-11X	29	0.815 - 0.930	0.753 - 0.868	0.630	1.090	0.40	0.27	100
G9-12	31	0.870 - 0.975	0.804 - 0.920	0.630	1.310	0.43	0.29	100
G9-12X	35	0.915 - 1.040	0.855 - 0.980	0.690	1.160	0.43	0.29	100
G9-13X	41	0.995 - 1.145	0.933 - 1.083	0.750	1.310	0.50	0.34	100
G9-14	42	1.110 - 1.225	1.038 - 1.180	0.750	1.500	0.53	0.36	100
G9-14X	44	1.175 - 1.284	1.113 - 1.222	0.630	1.440	0.53	0.36	100
G9-15X	45	1.235 - 1.360	1.173 - 1.298	0.810	1.500	0.53	0.36	100
G9-16	49	1.311 - 1.470	1.249 - 1.400	0.750	1.630	0.67	0.45	100
G9-17X	54	1.513 - 1.600	1.451 - 1.537	0.500	1.750	0.67	0.45	100
G9-18	55	1.560 - 1.682	1.498 - 1.620	0.750	1.880	0.72	0.48	100
G9-19	57	1.750 - 1.880	1.688 - 1.818	0.750	2.000	0.80	0.52	100
G9-20	58	1.807 - 1.938	1.743 - 1.874	1.000	2.160	0.90	0.60	100
G9-21	62	1.902 - 2.085	1.839 - 2.015	1.000	2.310	0.90	0.60	100
G9-240	72	2.298 - 2.464	2.235 - 2.401	1.000	2.630	1.60	1.05	10
G9-250	75	2.395 - 2.602	2.333 - 2.540	1.130	2.810	1.60	1.05	10
G9-300	88	3.270 - 3.862	3.200 - 3.492	1.120	3.690	1.70	1.25	10
G9-400	95	4.368 - 4.622	4.288 - 4.542	1.000	5.000	2.80	2.20	10



We can provide these tags embossed and attached to hose assemblies according to your instructions.

Part No.	Description	PRICE EACH
----------	-------------	------------

### TAGS & TIES



ID101	1.5" x 2.5" Type 304 Stainless Tag	\$ 2.60
-------	------------------------------------	---------



AS211	1/4" x 10" Type 304 Stainless Tie	\$ 2.50
AS212	1/4" x 16.5" Type 304 Stainless Tie	3.10
AS213	1/4" x 22.5" Type 304 Stainless Tie	4.20
AS215	1/4" x 35" Type 304 Stainless Tie	6.30



Part No.	Length	Bundle Diameter	Width	Tensile Strength	PRICE EACH		Std Pkg
					Loose	Std Pkg	
<b>NYLON CABLE TIES</b>							
<b>CT... WHITE NYLON FOR INDOOR USE</b>							
<b>Miniature</b>							
CT-0475	4 <sup>3</sup> / <sub>4</sub> "	1.18"	0.098"	18 lb	\$ 0.07	\$ 0.04	100
<b>Standard</b>							
CT-0750	7 <sup>1</sup> / <sub>2</sub>	2.05	0.189	50	0.12	0.08	100
CT-1100	11	3.19	0.189	50	0.19	0.14	100
CT-1450	14 <sup>1</sup> / <sub>2</sub>	4.02	0.189	50	0.21	0.15	100
CT-1700	17	4.92	0.189	50	0.33	0.24	100

### CTB... BLACK UV STABILIZED FOR OUTDOOR USE

<b>Miniature</b>							
CTB-0475	4 <sup>3</sup> / <sub>4</sub> "	1.18"	0.098"	18 lb	\$ 0.07	\$ 0.04	100
<b>Standard</b>							
CTB-0750	7 <sup>1</sup> / <sub>2</sub>	2.05	0.189	50	0.12	0.08	100
CTB-1100	11	3.19	0.189	50	0.19	0.14	100
CTB-1450	14 <sup>1</sup> / <sub>2</sub>	4.02	0.189	50	0.21	0.15	100
CTB-1700	17	4.92	0.189	50	0.33	0.24	100
<b>Heavy Duty</b>							
CTB-1775	17 <sup>3</sup> / <sub>4</sub>	5.24	0.354	175	0.74	0.52	100
CTB-2400	24	7.28	0.354	175	0.90	0.64	100

**Petrowrap** is a tape system designed to repel water, salt, alkalis and acids to protect surfaces from corrosion. Composed mainly of petrolatum and anti-corrosion agents, Petrowrap will not harden or peel, and requires no maintenance. Protect your flanges, steel pipes, marine deck equipment by following these simple steps

1. Start with a dry surface
2. Eliminate air pockets by using petrowrap filler
3. Wrap petrowrap tape spirally with a 50% overlap to assure total protection.

Part No.	Description	PRICE EACH
----------	-------------	------------

### G12... PETROWRAP ANTI-CORROSION TAPE

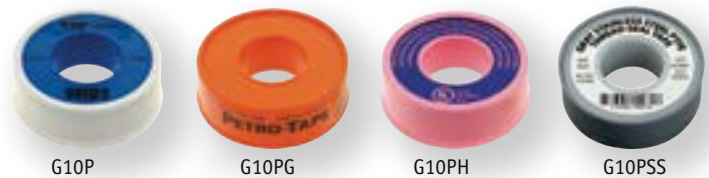


G12PT-200	Tape, 2" wide x 394" long	\$ 18.30
G12PT-400	Tape, 4" wide x 394" long	36.70
G12PTF	Filler, 500g (1.1 lb) block	10.40
G12PTOW	Overwrap Tape	19.50

### THREAD SEALANT

Part No.	Description	PRICE EACH		Pkg Qty
		Loose	Std Pkg	

### G10P... TEFLON® TAPE (Teflon is a registered trademark of Dupont Corporation)



Our standard white Teflon® tape measures 0.003" thick				
G10P	1/2" wide, 520" long	\$ 0.85	\$ 0.65	10
G10PW	3/4" wide, 520" long	2.10	1.50	10

Petro Tape is light green and is ULC listed for natural gas				
G10PG	1/2" wide, 540" long	5.80	5.40	10
G10PGW	3/4" wide, 540" long	7.60	7.00	10

Our Heavy Duty pink tape is 33% thicker (0.004") and is UL listed for natural gas				
G10PH	1/2" wide, 260" long	3.50	2.90	10
G10PHW	3/4" wide, 520" long	3.90	3.40	10

For Stainless steel threads we offer a thick, high density tape with nickel pigment:				
G10PSS	1/2" wide, 260" long	6.40	5.90	10

### G10L... LIQUID THREAD SEALANT



G10L-2	59ml (2 US fl.oz) tube of thread sealant	\$ 8.20
G10L-4	118ml (4 US fl.oz) liquid thread sealant	17.40
G10L-8	237ml (8 US fl.oz) liquid thread sealant	28.10
G10LM-8	250ml metallic paste compound with lead	37.10

### G38-GL... LUBRICANT FOR INSTALLING GROOVED FITTINGS

This lubricant is water soluble and non-toxic, contains no petroleum and will not support bacterial growth. Designed to prevent accidental pinching of gasket when installing grooved couplings.



G38-GL	450 gram container	\$ 30.90
--------	--------------------	----------

### OILPAD... OIL ABSORBENT PADS

These oil cleanup pads measure 15" x 18" and are made from polypropylene. They reject water, and so are ideal for land and water use, and typically absorb 15 to 25 times their weight in spilled oil (up to 1.36 litres per pad).

Part No.	PRICE EACH	Std Pkg	Pkg Qty
	Loose		
OILPAD-1518	\$1.55	\$1.35	100



We stock 90 durometer nitrile o-rings that are suitable for high pressure hydraulic service. Softer 70 durometer seals are sometimes preferred for general industrial and automotive use. Where these are preferred for quick coupling repair seals, we stock these as well. Specify G11-N90 for hydraulic service and G11-N70 for low pressure use. Our part number includes the AS568 size reference. This list is limited to popular inch sized parts, since the AS568 specification lists about 350 sizes up to 26" diameter. Please call us for other sizes and materials. To view a complete listing of AS568 sizes visit the resources section on our website.

For convenience, we offer the following kits:

## G11 INDUSTRIAL O-RING KITS



### G11 O-RINGS



Part Number	Cross Section*	Nominal Size I.D.	PRICE		Pkg Qt
			Loose	Std Pkg	
G11-N90-006	1/16"	1/8"	\$ 0.18	\$ 0.12	100
G11-N90-007	1/16"	5/32"	0.19	0.13	100
G11-N90-008	1/16"	3/16"	0.19	0.13	100
G11-N90-009	1/16"	7/32"	0.19	0.13	100
G11-N90-010	1/16"	1/4"	0.19	0.13	100
G11-N90-011	1/16"	5/16"	0.19	0.13	100
G11-N90-012	1/16"	3/8"	0.19	0.13	100
G11-N90-110*	3/32"	3/8"	0.19	0.13	100
G11-N90-111	3/32"	7/16"	0.19	0.13	100
G11-N90-112*	3/32"	1/2"	0.19	0.13	100
G11-N90-113	3/32"	9/16"	0.25	0.17	100
G11-N90-114*	3/32"	5/8"	0.19	0.13	100
G11-N90-115	3/32"	11/16"	0.37	0.24	100
G11-N90-116	3/32"	3/4"	0.37	0.24	100
G11-N90-210	1/8"	3/4"	0.60	0.40	100
G11-N90-211	1/8"	13/16"	0.57	0.38	100
G11-N90-212	1/8"	7/8"	0.60	0.40	100
G11-N90-213	1/8"	15/16"	0.60	0.40	100
G11-N90-214	1/8"	1"	0.57	0.38	100
G11-N90-215	1/8"	1 1/16"	0.66	0.43	100
G11-N90-216	1/8"	1 1/8"	0.69	0.46	100
G11-N90-217	1/8"	1 3/16"	0.72	0.48	100
G11-N90-218	1/8"	1 1/4"	0.80	0.52	100
G11-N90-219	1/8"	1 5/8"	0.80	0.52	100
G11-N90-220	1/8"	1 3/8"	0.80	0.52	100
G11-N90-221	1/8"	1 7/16"	0.86	0.57	100
G11-N90-222	1/8"	1 1/2"	0.95	0.66	100
G11-N90-225	1/8"	1 7/8"	1.17	0.81	100
G11-N90-228	1/8"	2 1/4"	1.38	0.93	100
G11-N90-232	1/8"	2 3/4"	1.80	1.17	100
G11-N90-237	1/8"	3 3/8"	3.29	2.18	100
G11-N90-325	3/16"	3 1/2"	1.59	1.04	100
G11-N90-326	3/16"	3 5/8"	1.70	1.12	100
G11-N90-327	3/16"	3 3/4"	1.70	1.14	100

G11KIT-N70 \$ 41.90  
 G11KIT-N90 68.50

Both kits contain 382 assorted o-rings made from 70 durometer nitrile in 30 different sizes. The N70 o-rings are suitable for general automotive and industrial applications. For high pressure hydraulic service, harder (N90 durometer) seals are used.

NOTE: Actual cross sections are larger than nominal size to allow for compression sealing. Cross sectional compression should be 10-30%. In addition, o-rings should be specified that are slightly smaller than the actual diameter of the rod or tube, so that they fit snugly. Ideally, they should be stretched 2% to 3% on installation.

\* Sizes marked with an asterisk are also stocked in 70 durometer for quick coupling use.

# ACCESSORIES

Part Number	Thread Type	Thread & Description	PRICE EACH		
			Loose	Std	Pkg

## GREASE GUN COUPLER



G13C-02	1/8" NPT	Standard duty narrow model	\$ 3.70	\$ 3.40	5
G13CHD-02	1/8" NPT	Heavy duty model	12.40	11.30	5
G14C-02	1/8" NPT	Fits 5/8" button head fittings	83.40	82.10	5

## GREASE FITTINGS



G13UNF-00	1/4"-28	Straight	0.47	0.30	100
G13UNF-45	1/4"-28	45°	0.83	0.54	100
G13UNF-90	1/4"-28	90°	0.83	0.54	100
G13NPT-02-00	1/8" NPT	Straight	0.59	0.39	100
G13NPT-02-45	1/8" NPT	45°	0.83	0.57	100
G13NPT-02-90	1/8" NPT	90°	0.83	0.57	100
G13NPT-04	1/4" NPT	Straight	1.05	0.72	100
G13M-06-00	6mm Metric	Straight	0.47	0.30	100
G13M-06-45	6mm Metric	45°	0.83	0.54	100
G13M-06-90	6mm Metric	90°	0.83	0.54	100
G13M-08-00	8mm Metric	Straight	0.59	0.36	100
G13M-08-45	8mm Metric	45°	0.83	0.54	100
G13M-08-90	8mm Metric	90°	0.83	0.54	100
G13M-10-00	10mm Metric	Straight	0.59	0.39	100
G13M-10-45	10mm Metric	45°	0.83	0.57	100
G13M-10-90	10mm Metric	90°	0.83	0.57	100

## GREASE FITTING ASSORTMENTS

G13KIT-SAE	100 pieces assorted SAE	\$ 31.00
G13KIT-METRIC	110 pieces assorted metric	34.50
G13KIT-COMBO	70 pieces SAE & metric	24.00



Part Number	Thread Type	Thread & Description	PRICE EACH		
			Loose	Std	Pkg

## BUTTON HEAD GREASE FITTING



G14NPT-02	1/8" NPT	5/8" Button head straight	\$ 5.25	\$ 4.77	10
-----------	----------	---------------------------	---------	---------	----

Note: Button head fittings are typically used on large machinery where a greater flow of grease is required.

Part Number	Thread Type	Thread & Description	PRICE EACH		
			Loose	Std	Pkg

## GREASE ADAPTERS



1608GR



1648GR



1698GR

1608GR-01-02	1/4"-28	Female 1/8" NPT Adapter	8.50	10
1648GR-01-02	1/4"-28	Female 1/8" NPT 45° Adapter	11.10	10
1698GR-01-02	1/4"-28	Female 1/8" NPT 90° Adapter	10.20	10

## GREASE FITTING CAPS



G13PC	Fits standard grease fittings	0.30	0.20	100
-------	-------------------------------	------	------	-----